



Less Chair Time.
Happy Patients.

Denture cases with a quicker, simpler digital workflow.

With new digital technologies delivering greater accuracy and more streamlined workflows, digital dentures offer not only an improved experience for your patients, but also a valuable growth opportunity for your practice.

Whether you are an experienced intraoral scanner user or just beginning your digital journey, Precision Dental provides the ideal opportunity to partner with us in upgrading your patients' existing full dentures through a simplified and efficient digital workflow.

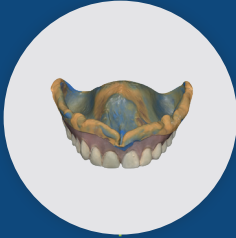
Introducing Precision Digital Replica Dentures - an advanced digital denture solution designed to transform the way full denture cases are treated.

Utilising the latest in digital manufacturing technology, Precision Digital Replica Dentures streamline both the clinical and laboratory workflow, helping you deliver accurate, durable, and aesthetic results with greater efficiency and faster turnaround times.

With our simplified digital workflow, patients with existing full dentures can receive their new dentures in as little as two weeks.* Experience a more predictable and efficient approach to full denture treatment with Precision Digital Replica Dentures - specifically developed for patients with existing full dentures.



1st Appointment: Scan and Submit



Intraoral scan of impression

Using an intraoral scanner, take a reline wash scan together with the opposing and bite records. Submit the scans along with your case specifications through your scanner's order form to begin the process.

While the new dentures are being digitally manufactured, your patients can continue wearing their existing dentures for greater comfort and convenience.

Design & Manufacture: Precision Dental



Manufacturing

At Precision Dental, we design and manufacture dentures after final approval of the digital design.

Using advanced CAD/CAM workflows and precision milling technology, we produce full dentures to your exact specifications using high-quality materials for consistent, reliable results. Our skilled technicians then finish each case to ensure optimal aesthetics, blending digital innovation with expert craftsmanship.

Every case is carefully quality-checked before being packaged and shipped to ensure excellent fit and finish.

2nd Appointment: Denture Delivery



The final result

The new dentures are now ready for delivery. At this appointment, try in the prosthesis and assess fit, comfort, and function to ensure optimal results.

Once confirmed, issue the final dentures to your patient—completing the process in just two appointments.* Your patient can now enjoy a confident, brand-new smile with improved comfort and aesthetics.



Benefits for Patient

Precision Denture Solutions are designed to provide a smoother, more comfortable patient experience — from the first consultation through the long-term wear of their dentures.

- Fewer appointments required
- Patients can continue wearing their current dentures while new dentures are being fabricated
- Improved comfort and fit
- Easy replacement options without restarting the entire process
- Natural-looking aesthetics
- Durable, long-lasting results

Benefits for Dentist

Precision Denture Solutions deliver immediate advantages that help improve workflow efficiency, reduce clinical time, and support greater practice profitability.

- Save chair time with a streamlined denture workflow
- Simplify case management from start to finish
- Attract new patients with modern digital denture solutions
- Maintain a permanent digital record for easy future reproduction
- Minimise post-insertion adjustments and remakes
- Deliver a more predictable and efficient patient experience

Dentures



Every case handled, start to finish.